



Update on the 2022 Atlantic Menhaden Fishery

NOAA FISHERIES

Sustainable Fisheries Branch
NMFS Beaufort Laboratory
Beaufort, NC



GSMFC - Fall Meeting
October 17
San Antonio, Texas

2022 Landings for Reduction

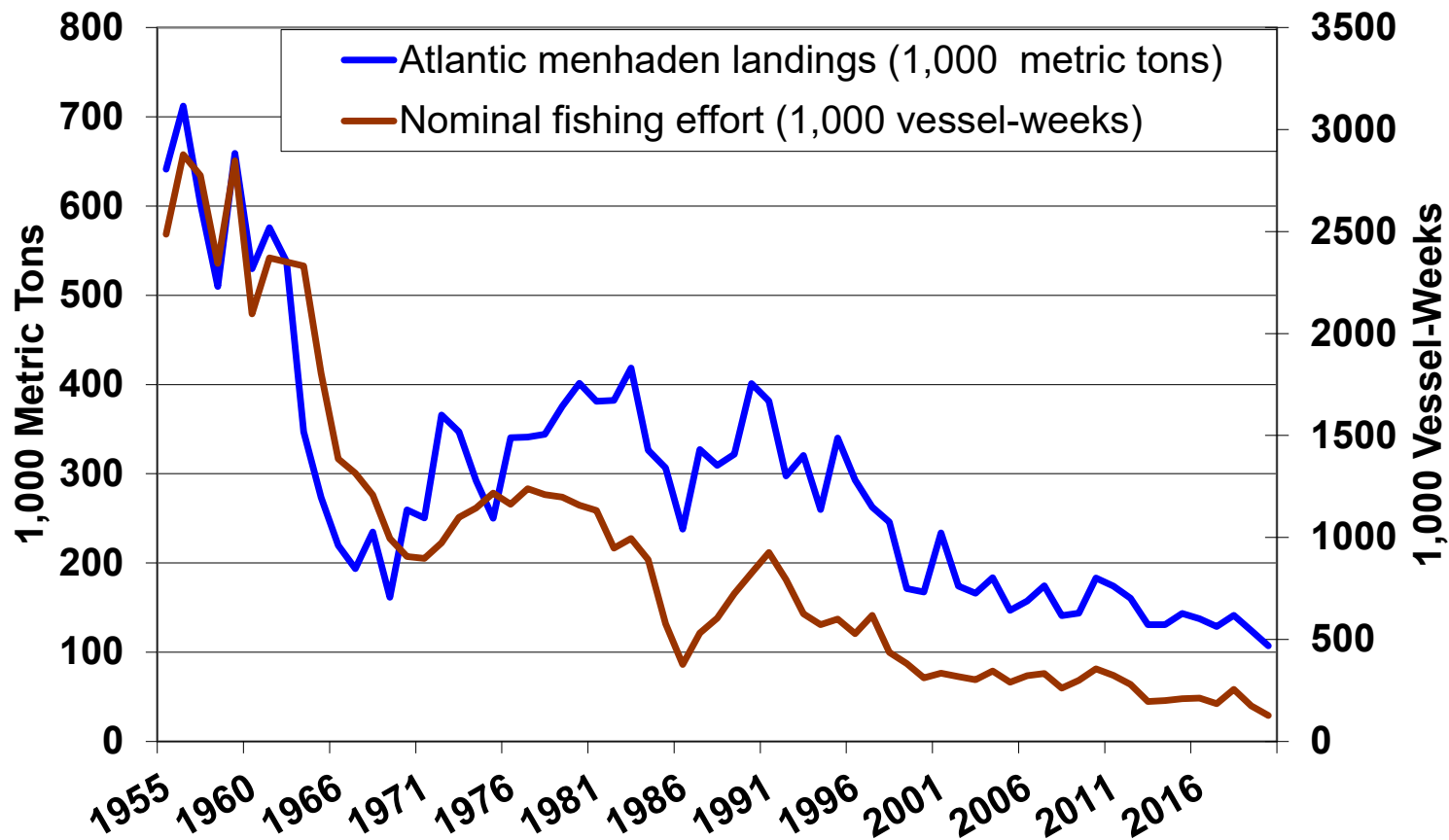
- One fish factory on Atlantic coast at Reedville, VA, since 2005
- As last year, 2022 landings for reduction constrained by the coastwide TAC
 - TAC remained at 194,400 mt for 2022 (136,253 mt for reduction)
- Through September 30:
 - 84,598 metric tons (or 278 million standard fish)
 - Decreased 14.5% from 2021 (99,002 mt)
 - Decreased 18.1% from previous 5-yr average (103,242 mt)

Vessel Participation in 2022

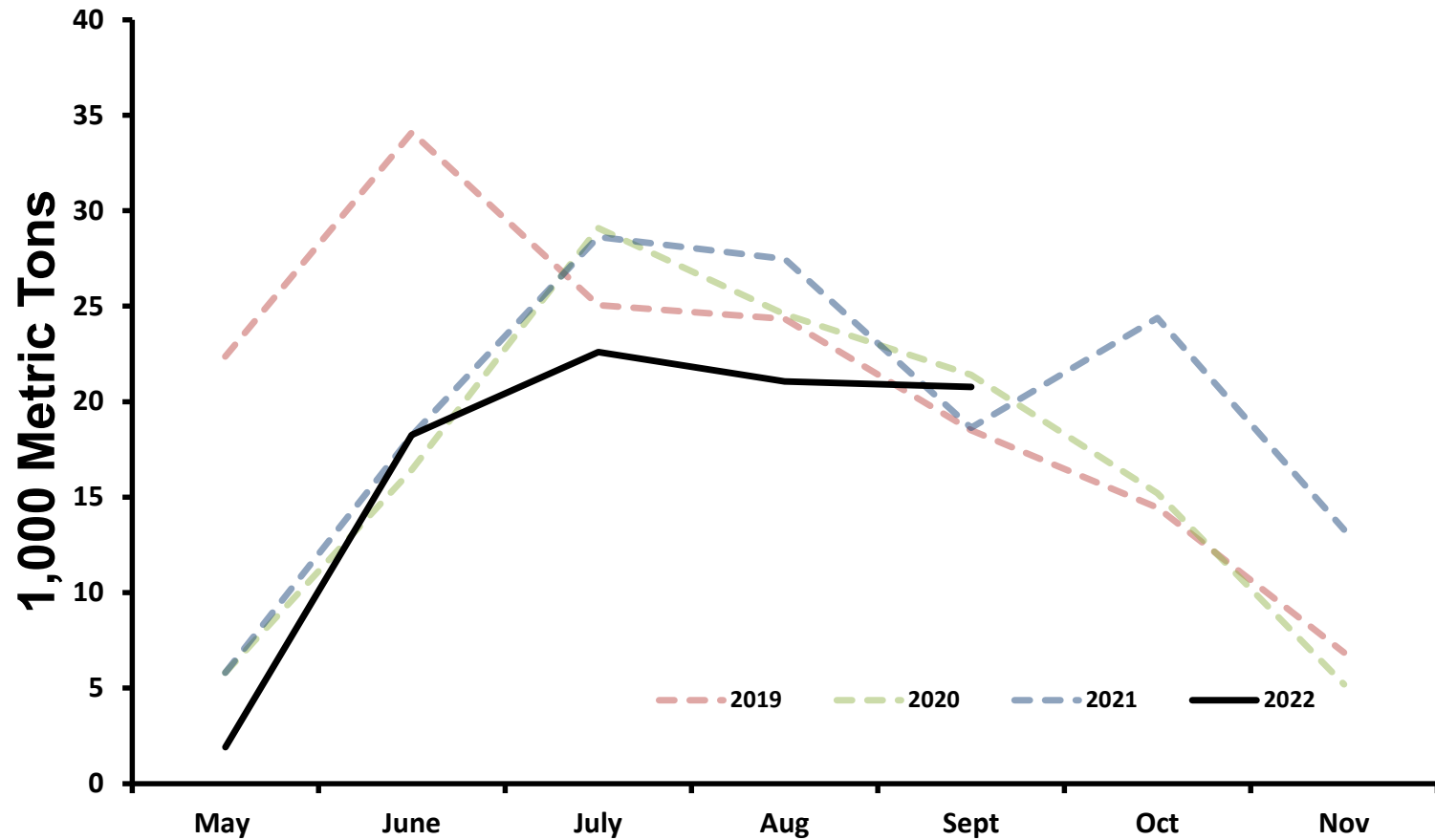
- 7 Omega Protein vessels unloaded Atlantic menhaden for reduction in 2022 at Reedville
- 1 VA 'snapper' boat (bait vessel) also unloaded minor quantities for reduction at Omega
 - One landed for **bait** only
- ~2 purse-seiners reported landings for **bait** in Virginia



Reduction Landings and Nominal Fishing Effort



Reduction Landings by Month



Coastwide Stock

- Bait Closures
 - Maine Episodic Event Fishery: Closed June 28th
 - Incidental take allowed (6,000-lb limit)
 - Massachusetts: Closed July 28th
 - Rhode Island: Open
 - New York: Open
 - New Jersey: Open

2022 Atlantic Menhaden TAC, by allocation unit

Unit	Percent of TAC	2022 (Metric Tons)
ME	0.52%	995
NH	0.5%	962
MA	1.3%	2,453
RI	0.52%	996
CT	0.52%	993
NY	0.7%	1,330
NJ	10.9%	20,925
PA	0.5%	962
DE	0.51%	986
MD	1.9%	3,634
PRFC	1.1%	2,066
VA (Reduction)	70.8%	136,253
VA (Bait)	7.9%	15,139
NC	1.0%	1,840
SC	0.5%	962
GA	0.5%	962
FL	0.52%	997
Total		192,456*

* Does not include the 1% episodic set-aside

Atlantic menhaden assessment

- Single species assessment and ERP (ecological reference point) both accepted for use in management
 - Single species assessment will be used, but management may be informed by ERP models
- Update assessment will be presented to the board soon



Questions?

